



## Installation and safety information

### Rear fender with lighting and seat



Indian Scout Bobber from model year 2018

Indian Scout from model year 2014



## Caution



### Important safety advice:

- Working on motorcycles poses a safety risk. Some work may only be carried out by appropriately qualified personnel. Faulty work can have serious consequences and may pose a threat to life and health. Only undertake installation works if you are sufficiently qualified and have an official workshop manual as well as all relevant service notifications available. Otherwise, we strongly recommend that the installation is carried out or at least checked in a specialist workshop.
- Any work in relation to the installation, removal and tightening torque of original parts should always be carried out in compliance with the workshop manual.
- All screws must be attached with thread-locking fluid.
- It is your responsibility to check the product regularly and to determine if a service or replacement is required.
- Please bear in mind that some products are safety-relevant parts of your vehicle. After a fall or collision, check the product and if there is the slightest indication of damage, you must replace it.
- Some products require registration.
- **These products have been designed for a standard vehicle. Suspensions with a different range must not be mounted.** ABM® Fahrzeugtechnik GmbH makes no warranty or guarantee of any kind for any damages whatsoever arising out of the combination with other component parts not tested by ABM, as a consequence of improper installation or inadequate maintenance.
- Brake fluid may damage painted surfaces and fairings. Use suitable means to protect all of the surfaces against damage.

## 1 Preparation

- Please read the entire safety information and installation manual carefully.
- **Before painting, the fender must be fitted and adjusted, where necessary.**
- A motorcycle not securely positioned can fall over during the following work. Therefore, make sure that the motorbike is positioned on solid, flat ground and is secured against falling over and rolling away.
- Keep children and pets away from the work area.
- Protect removed parts from damage.
- Please note when disassembling individual parts which screws are used to fasten them. Keep these parts and screws and unless specified otherwise, reuse when assembling.

## 2 Content and recommended accessories:

Special tool required?

Heatgun  
Torque wrench  
Thread-locking fluid  
Saw

### Caution

- Before installation, ensure that the suspension is set correctly. The driving height (spring preload), measured between the upper and lower fixing screw (eye-to-eye) of the spring struts, should be 275mm in loaded condition (see original operating manual).
- To fasten the number plate, a holder is required.
- This kit has been designed for the original tyres and the original spring elements and tested with these.



## 3 Installation: Fender with lights



Remove load from the rear wheel using a jack.

**Caution:**

**Make sure that the motorbike is positioned securely.**



Remove seat.

Disconnect the battery, unclip holder and electrics and remove the battery.



Remove the upper silencer and cover the lower silencer with a cloth.



Disconnect the plug for the rear lighting.

Loosen all fixing screws of the original fender and the rear frame and completely remove these.



First, loosen the upper screw of the shock absorber on the left and insert a provided spacer between the shock absorber and the frame. The original washer is omitted.

**Caution: When loosening the screw, the spring strut should be neither under pressure nor under tension.**

Reattach the shock absorber.

Next, mount the spacer on the right side (washer is omitted).





Check whether the driving height is correctly set (spring preload) according to the original operating manual.

**Caution: Incorrectly set suspension may lead to damage to the fender (painting, holder etc.).**



Slide the bump stops on both sides all the way up.



Slide a plastic washer onto both sides.



Press the bump stop down again.



Loosen the lower screws of the shock absorbers one by one...



... and lightly attach the struts between the swingarm and the shock absorber using the original screw.



Reattach the upper silencer.



Remove the belt guard at the swingarm.



Using an angle grinder or a saw, cut slots into both brackets of the belt cover...



... for the holder of the rear fender.



Mount the belt guard with the holder using the original screws.

At first, only lightly tighten the front screw.



Loosen the holder for the brake line on the right side of the swingarm.



Carefully slide the fender into the swingarm and ...



...attach to the swingarm using the screw (M6), a washer and one of the spacer sleeve provided (check for central position of the fender) as well as the original brake line holder. Only lightly tighten screw at this moment.

*Tip: Place a towel between the rear wheel and the fender.*



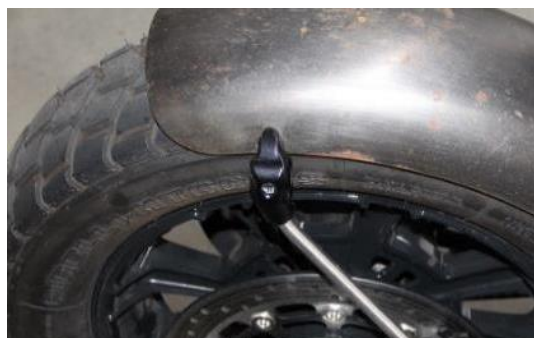
Using the screw (M6) and washer provided, lightly attach the fender to the left holder.

The fender should still be easily movable.





Attach the braces with the screws, washers and o-rings...



... to the fender so that they can also still be easily movable.



**Caution:**

Align the fender so that its edges run parallel to the outer edges of the wheel. The distance (rear, centre) between the fender and the tyre tread (new) should now be 20 mm.

The distance between the fender and the battery cover must be over 20 mm.



Incorrect



Correct

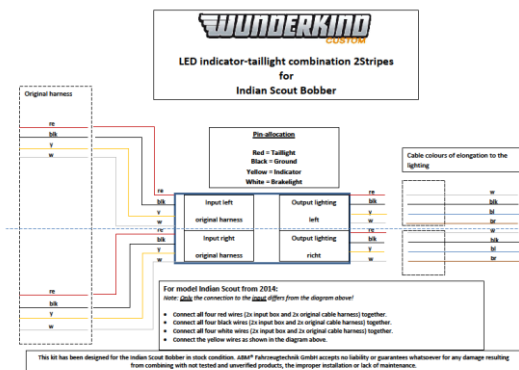




Attach the setscrew at the lighting unit.



After the alignment, all screws must be attached using thread-locking fluid.

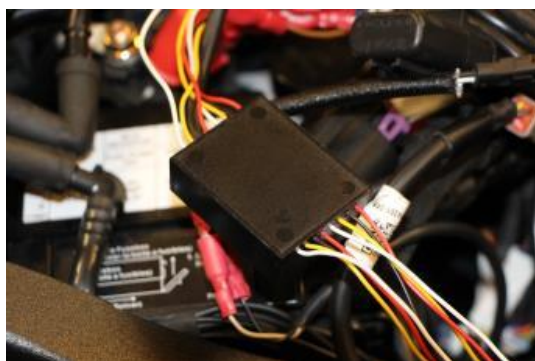


Regulating the rear lighting requires a control box with this model (not provided).

Connect the entire lighting according to the diagram.

**Attention: The connection of the control box to the Indian Scout differs from the Indian Scout Bobber. Please pay attention to the diagram!**

**ABM® Fahrzeugtechnik GmbH accepts no liability or guarantee whatsoever for any damage resulting from the improper installation or connection of the box.**



After connection, the control box can be run under the seat and attached there.

Check proper function.

## Description of the heat-shrink solder connectors

The tin is melted with a heatgun and a secure contact is ensured. Furthermore, the connector shrinks with inside adhesive and thus ensures impermeability. The transparent heat-shrink tubing enables a visual control of the connection.





Run both cable harnesses under the linkage and in front of the battery according to diagram.



Reassemble and reattach all removed parts.

Check the entire lighting system.

The fender and the battery cover must not touch each other at full load.

**ABM® Fahrzeugtechnik GmbH accepts no liability or guarantee whatsoever for any damage (painting, holder etc.) resulting from the improper installation or incorrectly set suspension.**

## 4 Installation: Seat





Loosen all four fixing screws of the tank.

Remove the pin for the original seat from the tank holder.



Remove the rubber cover.



Cut out the cutting template.



Place the template onto the rubber cover and mark the cutting line.



Cut out the rubber cover exactly at the marked spot.





Slide the cover under the tank like as per original.



Screw the seat holder onto the original tank holder using the screws and safety washers provided.

Tightening torque 18 Nm



Insert the rubber cover of the holder into the notch as well.

If necessary, rework the rubber cover.



**Note:**

*Before proceeding to the next step, make sure that the electrics under the seat have been fully connected and checked for function and that all screws have been tightened.*



Cover the rear fender and carefully slide the battery cover over the holder.



Lightly attach the cover to the frame using the four screws and large diameter washers.



Screw in the screw (M5) at the front of the plate and tighten.

Tightening torque 5 Nm



Centrally align the plate and attach all four screws.

Tightening torque 20 Nm

**Caution: Recheck the correct distance of the battery cover and the fender.**



Mount the plate nuts to the seat from below.

4x M5 plate nut

2x M4 plate nut



Slide the two nuts provided from below into the holder notch.



Attach the seat shell onto the holder using the two screws and washers provided, set as required and tighten.

Tightening torque 25 Nm



Place the seat onto the shell and attach using the screws (M5) provided.

*Note: Screw in the hexagon screws at the front.*



Attach the emblem using the two screws (M4) provided.

## 4 Final check

All electric wires must be laid in a manner which prevents them from bending or getting pulled during spring deflection movements and which adequately protects them against rubbing.

After completing the work, check that all components and screws are tight and functioning correctly. Also check the rear wheel's freewheel, the spring travel and the functionality of the brake system. Afterwards, a test drive must be done! After completing the test drive, the tightness of all screw connections must be checked, as well as the adequate freedom of access of all moving parts. Re-test the rear wheel's freewheel and the spring travel and check the brake system for overheating.



