



**Installation and safety information**

## **Front spoiler**



**Indian FTR 1200**

**From model year 2019**



## Caution



### Important safety advice:

- Working on motorcycles poses a safety risk. Some work may only be carried out by appropriately qualified personnel. Faulty work can have serious consequences and may pose a threat to life and health. Only undertake installation works if you are sufficiently qualified and have an official workshop manual as well as all relevant service notifications available. Otherwise, we strongly recommend that the installation is carried out or at least checked in a specialist workshop.
- Any work in relation to the installation, removal and tightening torque of original parts should always be carried out in compliance with the workshop manual.
- All screws must be attached with thread-locking fluid.
- It is your responsibility to check the product regularly and to determine if a service or replacement is required.
- Please bear in mind that some products are safety-relevant parts of your vehicle. After a fall or collision, check the product and if there is the slightest indication of damage, you must replace it.
- Some products require registration.
- These products have been designed for a standard vehicle. ABM® Fahrzeugtechnik GmbH makes no warranty or guarantee of any kind for any damages whatsoever arising out of the combination with other component parts not tested by ABM, as a consequence of improper installation or inadequate maintenance.
- Brake fluid may damage painted surfaces and fairings. Use suitable means to protect all of the surfaces against damage.

## 1 Preparation

- **Manufacturing-related tolerances may result in minor deviations in the fit. Before coating, the front spoiler must be fitted and adjusted, where necessary.**
- Please read the entire safety information and installation manual carefully.
- A motorcycle not securely positioned can fall over during the following work. Therefore, make sure that the motorbike is positioned on solid, flat ground and is secured against falling over and rolling away.
- Keep children and pets away from the work area.
- Protect removed parts from damage.
- Please note when disassembling individual parts which screws are used to fasten them. Keep these parts and screws and unless specified otherwise, reuse when assembling.

## 2 Content and recommended accessories:

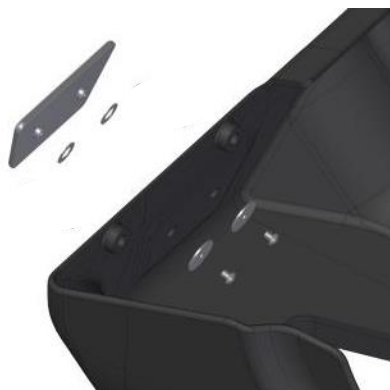
## Content

No.	Item	
1 set	Emblem, 2x washers, 2x large diameter washers M4, 2x screws M4	
1	Front spoiler	
2	Bracket	
4	Plastic washers	
4	Screws M6	

## 3 Installation: Spoiler



Place the vehicle safely on its side or on an jack.



Align and fasten the emblem on the spoiler using the washers, and screws.  
Use thread-locking fluid (medium strength).

Tightening torque: 3 Nm



Remove the front screw on the motor housing on the left (see image).



Attach a bracket on the motor using the original screw.

Align the bracket inwards and straight.

Tightening torque according to the specification of the vehicle manufacturer.



Remove the rear screw on the motor housing on the right (see image).



Attach the second bracket on the motor using the original screw.

Align the bracket inwards and straight.

Tightening torque according to the specification of the vehicle manufacturer.



Align the front spoiler and attach it with the provided plastic washers and screws.

Tightening torque: 6 Nm



## 4 Final check

- Afterwards, a test drive must be done! After completing the test drive, the tightness of all screw connections must be checked, as well as the adequate freedom of access of all moving parts. Re-test the rear wheel's freewheel and check the brake system for overheating.

